

Bill Gates Compound
Rondo IV, 2019
30' x 8' x 20'

Corporate & Public Sculptures

BRUCE

BEASLEY





Rondo II,
Stainless Steel, Hearst Mining Circle,
University of California at Berkeley

During an art career spanning 60 years and including countless prestigious private, corporate and civic commissions, Bruce Beasley's work has been globally collected and critically acclaimed.

Beasley's indoor and outdoor abstract sculptures have been displayed and purchased by premier international galleries, institutions and museums, including:

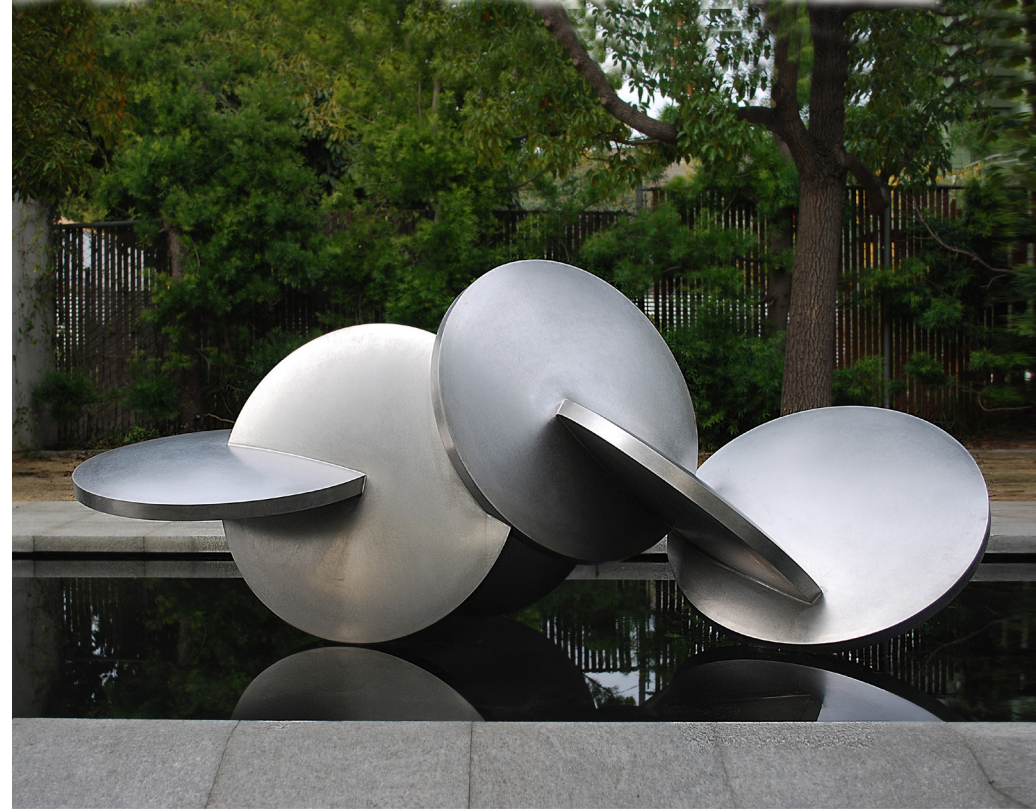
- Solomon R. Guggenheim Museum, New York
- Musee d'Art Moderne, Paris, France
- National Art Museum of China, Beijing
- National Museum of American Art, Washington, D.C.
- Stadtische Kunstate halle Mannheim, Mannheim, Germany
- The California State Capital Building
- The Beijing Olympics
- Museum of Modern Art, San Francisco, California
- Fine Arts Museums, San Francisco, California
- Los Angeles County Art Museum, Los Angeles, California
- Santa Barbara Museum of Art, Santa Barbara, California
- Beijing Museum of Contemporary Art
- Crocker Bank Corporate Headquarters



Vitality, Bronze, 30' x 9' x 11', City Hall Plaza, Oakland, CA

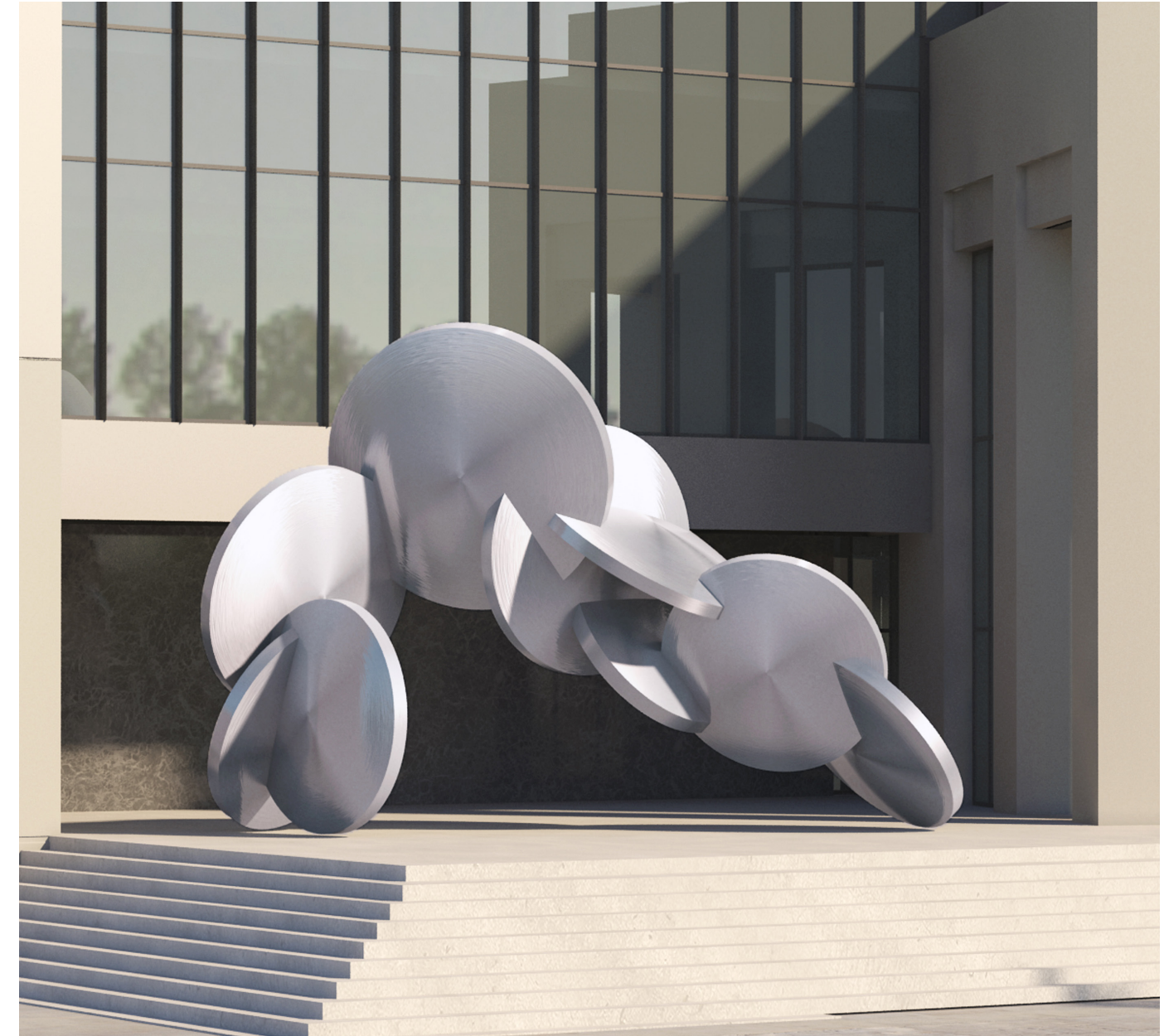
Destiny, Corten Steel, Sculpture Route along the Rio Santa Catarina





Cantata VIII, Stainless Steel, in Bb sculpture garden

Like Moore, Brancusi and DiSvero before him, Bruce Beasley is a committed abstract modernist. For six decades Beasley has passionately investigated the aesthetic impact of pure geometric and organic forms. Unlike his predecessors, however, Beasley refuses to fall into the pattern of a signature style, investigating cubic geometry for ten years, then turning his attention to more fluid forms. Today his sculptural and 2-d large scaled collages combine all of these passionate investigations.



Disk Cantata 14

While still a 20- year- old undergrad accepted to the prestigious Department of Art at UC Berkeley, Bruce Beasley was included -- alongside masters such as Picasso -- in the historic 1963 Art of Assemblage exhibition at the Museum of Modern Art, New York.

From that time to the present, the artist has relentlessly explored the range of abstract form in emotionally evocative, technically stunning sculptures.

His public and corporate works demonstrate the power of abstract modern sculpture to enrich public spaces, to highlight the architecture around them, and to include rather than compete with nature.



Rings 29



NAMES NEEDED FOR BOTH IMAGES

About the Artist

Though an Oakland transplant, Bruce Beasley hails from Los Angeles. His family opened the first Beverley Hills Bank and the artist entered Duke University to study rocket science. He discovered his life's passion was the language of form and was accepted to study sculpture at the prestigious Art Department of UC Berkeley.

Clear acrylic resins invented by Beasley in order to produce his monumental 2002 Apolymon, installed at California State Capital, were adopted by NASA and continue to be used today in Bathospheres for deep sea exploration.



Apolymon,
California State Capital, 2002

Between 1977 and 1994 Beasley's focus shifted to increasingly monumental works in aluminum, stainless steel, and bronze. During this period, Beasley participated in 17 solo and 56 group exhibitons, and produced significant commissions for institutons in both the U.S. and abroad. Highlights include "The California Sculpture Show", "Monumenta 19th Sculpture Biennale" and commissions for the Internatonal Airports of San Francisco and Miami, Stanford University, the State of Alaska, and Grounds for Sculpture in Hamilton, NJ.



Provo Knot



Gathering of the Moons, Stainless Steel, Olympic Park, Beijing

Bruce Beasley's *Gathering of the Moons*, was selected to adorn the entry courtyard of the Beijing Olympics. The sculpture was subsequently purchased for permanent installation in Beijing's Olympic Park.

During the past decade Beasley was featured in 29 solo exhibitions, 39 group exhibitions, and realized commissions for the 2008 Beijing Olympics, the Shanghai World Expo, the Crocker Museum in Sacramento, the City of Oakland, the City of Monterrey, Mexico the City of Cedar Rapids, and the Universities of Miami and Oregon.

**Donohue will send image (If theres not an image will eliminate 17 and 18)
Pg 18: 14 point font.**

Beasley most recently completed and installed the monumental commission, Sanctuary, for Santa Clara Valley Medical Center in San Jose.



Installing Torqueri VIII, stainless steel, 22 feet tall, onto base, installed at Belmont Village, Albany California

As part of every project, Bruce Beasley assiduously studies engineering demands of designs with his personal studio team. Bruce Beasley brings his nearly 50 years of experience with city planning and civic bureaucracies. The artist travels to meet with principals and stakeholders to gauge tastes, directions and project goals.



Torqueri VIII, stainless steel, 22 feet tall, installed at Belmont Village, Albany California



Dorian, Grounds for Sculpture



Quest III

Rondo IV, In a two year exhibition of Beasley sculptures at the UC Berkeley



Rollic, Stainless Steel, 2011, h x 26' w x 40' l, Green Square Park, Cedar Rapids, Iowa



The Bruce Beasley Foundation

In addition to building a highly successful career, Bruce Beasley is the Founder of the Bruce Beasley Foundation, a non-profit organization whose mission is to support and conserve the history of abstract modern sculpture, through exhibitions, archives and public and well as educational outreach. Public and corporate commissions do not profit the artist, but go toward assuring the longevity of the organization and its arts advocacy mission.

The Beasley Foundation is housed on a multi-site compound in Oakland that includes an architecturally stunning Museum, a sculpture garden, a working foundry, and studios where conception, patina and assembly are ultimately done by the artist by hand with trusted assistants.

Thanis,
Bronze, Private Estate in Bruce
Beasley sculpture garden





Beasley Museum and Studios, Oakland California
Corporate Projects in Progress



Name, Medium, Date, Dimensions

DONOHUE WILL SEND TEXT FOR LEFT SIDE AND USE ONE OF THE HIGH REZ COLLAGES FOR THE RIGHT

Art speaks to viewers about beauty, culture and about those who value its preservation and display.

The Bruce Beasley Foundation offers editions of in-door and environmental Beasley sculptures in configurations and dimensions designed alongside clients, to complement a variety of aesthetic directions and surrounding related architecture. The artist will fly in to meet with each prospective client and create a digital concept view for collaboration and input from clients prior to any signed agreement.

The artist, as well as the Beasley Foundation Director, Marlena Donohue, Art Historian, College Professor and Published Critic, welcome your inquiries. Ms. Donohue is available by phone, email and in person on request. We welcome you to email us for a visit to the Beasley Oakland compound or more information on availability and pricing.

